








**DECISION MAKING TIC FOR FIREFIGHTING.  
DURABLE, HIGH-RESOLUTION  
THERMAL IMAGING CAMERA.**

#### KEY CAMERA SPECS

	Resolution	320 x 240
	Field of View	57° x 42°
	Durability	IP67 waterproof, 2 meter drop
	Detection	-20°C to 550°C (-4°F to 1022°F)
	Imaging	Mixed Gain with SV1
	Flashlight	300 Lumen LED

**Seek**  
thermal

[thermal.com](http://thermal.com)



**AttackPRO Kit: FQ-PAEX**  
**5yr Enhanced Warranty: WA-5USATTACKPRO**

Designed with firefighters for firefighters, the AttackPRO™ thermal imaging camera offers an unmatched combination of image quality, durability, and price.

With its high resolution and wide field of view, AttackPRO is the new decision-making weapon of choice for captains and commanding officers. Mixed-gain pixel technology eliminates the visual confusion and delay of switching between high-gain and low-gain modes. AttackPRO lets you clearly see the fire and the crew, all in one detailed image.

The kit includes the AttackPRO camera, 2 batteries, and a charging dock.

**Designed and Manufactured in the USA with Global Components. Thermal sensor designed and manufactured by Seek in Santa Barbara, CA USA**



#### KEY FEATURES

##### Mixed Gain with SV1 Image Optimization

See the hottest and coolest regions of the scene simultaneously without freezing or switching gain modes; details enhanced with SV1

##### Durable, Waterproof Design

Durable and reliable design built with IP67 rating and 2 meter drop resistance

##### Wide, 57-Degree Field of View

Easily scan a large area to identify hazards or victims in seconds

##### Long-Lasting Rechargeable Battery

Greater than 6 hours of continuous thermal imaging

##### Simple Operation. Purpose-Built for the Fire Ground

One button thermal operation, no confusing menus or settings, Get the job done efficiently and consistently

#### BENEFITS

##### Decision Making on Command

Direct Firefighters, water, and resources with expedited tactical precision

##### Robust Personal TIC

Equip the entire department with the first affordable decision making TIC

##### See Through Smoke. Flashlight Optional.

300 lumen LED flashlight available at the touch of a button

##### Search and Rescue

Find victims and self-rescue faster with a reliable personal TIC

##### Execute 360 Size-ups & Overhaul Faster

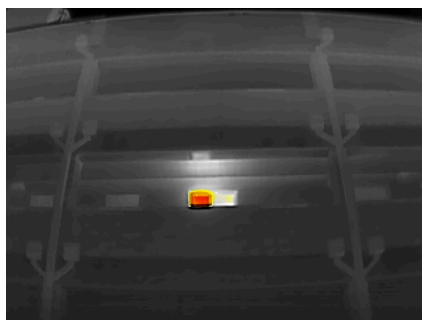
When seconds count, a Seek decision-making TIC saves time and lives

## TECHNICAL SUMMARY

SPECIFICATIONS	DESCRIPTION
Thermal Sensor	320 x 240 (76,800 pixels)
Detection Distance	12 inches to 1,000 feet
Field of View	57° HFOV, 42° VFOV
Temperature Range	-4 to 1,022°F (-20 to 550°C)
Operating Temp	-4 to 131°F (-20 to 55°C) - no time limit up to 302°F (150°C) - max 15 min up to 500°F (260°C) - max 5 min
Frame Rate	> 25 Hz Fast Frame
IP Rating	IP67 Waterproof
Flashlight	300 Lumen LED
Display	3.5" Color with Corning® Gorilla® Glass
Thermal Sensitivity	< 35 mK with SVI
User Interface	On device 2 tactile button operation
Temp. Display Scale	Fahrenheit or Celsius
Image modes	2 Options (TIBASIC-default, and TIBASIC+)
Storage Media	NA
Battery	>6 Hours Thermal Imaging (w/o flashlight); >3hrs (with thermal AND flashlight)

For support and user guides visit [thermal.com](http://thermal.com)

## THERMAL APPLICATIONS



360 SIZE UP



FIRE ATTACK



OVERHAUL

## 300 LUMEN LED LIGHT



Seek AttackPRO combines powerful thermal insight and a bright LED flashlight in an intuitive, two button interface.

## USER INTERFACE



### TI BASIC

Maintain your situational awareness with a simple and decluttered display showing greyscale and colorized regions



### TI BASIC+

Enhance your tactics with a spot temp readout while still maintaining greyscale and colorized regions

