







FirePRO™ 300

PERSONAL THERMAL CAMERA FOR
IMPROVED SITUATIONAL AWARENESS
AND FIREFIGHTER SAFETY

KEY CAMERA SPECS

	Resolution	320 x 240
	Field of View	42° x 57°
	Durability	IP67 waterproof, 2 meter drop
	Detection	-20°C to 550°C (-4°F to 1022°F)
	Imaging	Mixed Gain with SV1
	Flashlight	300 Lumen LED

Seek™
thermal

thermal.com

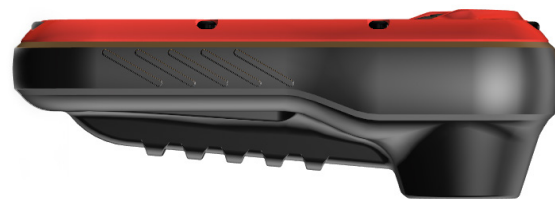


PN: FQ-AAAX

FirePRO 300 - the best innovation in personal thermal imaging. With FirePRO 300, you can equip every firefighter with an affordable and lightweight thermal camera to enhance situational awareness and improve firefighter safety.

Featuring our high resolution 320 x 240 sensor, FirePRO 300 provides firefighters with the ability to regain orientation in low visibility or blackout conditions. Additionally, Seek's game-changing Mixed Gain technology allows firefighters to see detail in the hottest and coolest regions of the scene at the same time without freezing and switching modes. Investing in a personal thermal imaging camera is an investment in your personal safety.

Designed and manufactured in the USA with global components. Thermal sensor designed and manufactured by Seek Thermal in Santa Barbara, CA USA.



KEY FEATURES

Made to endure and designed to be lightweight
IP67 waterproof with 2 meter drop durability and weights just 325 grams

Mixed Gain with SV1 Image Optimization
See the hottest and coolest regions of the scene simultaneously without freezing or switching gain modes; details enhanced with SV1

Fast Frame Rate, High-Resolution Sensor
320 x 240 sensor size with 76,800 individual temperature pixels refresh more than 25 times a second

Up to 6 hours of use on a single charge
Long lasting rechargeable battery ensures FirePRO 300 is always ready

Ergonomic 90° viewing angle
90° viewing angle makes pointing the camera as easy as a cell phone

BENEFITS

Improve situational awareness
Visualize hazards invisible to the naked eye and navigate safely

Find your way out in zero visibility conditions
FirePRO 300 is your lifeline to regain orientation and reduce maydays

Execute the mission faster
Quickly locate victims and hot spots when every second counts

Reduce the potential for rekindles
Multiple firefighters can use Survey Mode during overhaul

Redundancy
Serves as a redundant backup to the team's decision making TIC

Capture Photos and Record Videos
Save thermal photos and videos for education and training

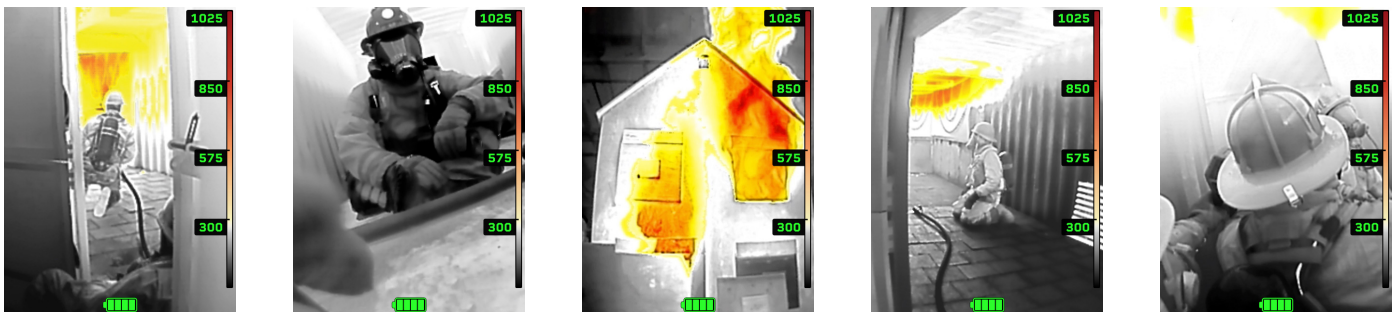
TECHNICAL SUMMARY

SPECIFICATIONS	FIREPRO 300
Thermal Sensor	320 x 240
Field of View	42° HFOV x 57° VFOV
Protective Sensor Window	Yes
Video Recording	Yes
Image Capture	Yes
Temperature Range	-4°F to 1,022°F (-20°C to 550°C)
Operating Temp (no limit)	-4°F to 185°F (-20°C to 85°C)
Operating Temp (5 min)	302°F (150°C)
Operating Temp (1 min)	500°F (260°C)
Frame Rate	> 25 Hz FastFrame
IP Rating	IP67 Waterproof
Impact Resistance	2 meter drop onto concrete
Flashlight	300 Lumen LED
Display	2.8" TFT 320 x 240 screen resolution
Thermal Sensitivity	< 35 mK with SV1
Viewing Angle	Ergonomic 90° viewing angle
Imaging Modes	FIRE (with TI Basic & TI Basic +) and SURVEY
Size: H x W x D	5.3 x 3 x 1.8 inches (135 x 76 x 46 mm)
Weight	0.7 lbs (325 grams)
Battery Life	6 hours in thermal only 3.5 hours with flashlight on

WHAT'S IN THE BOX

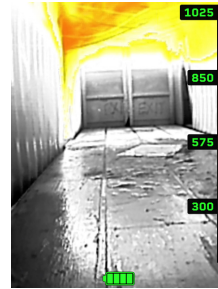
- FirePRO 300 camera
- Charging dock with retaining strap
- USB-C to USB-A cable
- Quick Start Guide and Safety Information Booklet

SAMPLE IMAGES



IMAGING MODES

All modes use Mixed Gain with SV1 Image Optimization



FIRE MODE
Using TI BASIC
(Without Spot Temp)



FIRE MODE
Using TI BASIC+
(With Spot Temp)



SURVEY MODE
With Spot Temp

