



# AttackPRO VRS

EVERYTHING YOU LOVE ABOUT ATTACKPRO,  
NOW WITH VIDEO RECORDING, SURVEY MODE,  
AND A HIGHER TEMPERATURE RANGE.

## KEY CAMERA SPECS

	Resolution	320 x 240
	Field of View	57° x 42°
	Durability	IP67 waterproof, 2 meter drop
	Detection	-20°C to 650°C (-4°F to 1,200°F)
	Imaging	Mixed Gain with SV1
	Flashlight	300 Lumen LED

Seek<sup>™</sup>  
thermal

thermal.com



AttackPRO Kit: FQ-PPVX  
5yr Enhanced Warranty: WA-5USATTACKPRO

Designed with firefighters for firefighters, the AttackPRO<sup>™</sup> VRS is the latest addition to the AttackPRO Series.

AttackPRO VRS builds on the unmatched image quality, durability, and affordability of the original AttackPRO. It now features video recording, a higher temperature range up to 650°C, and includes Survey Mode to enhance size-up and overhaul operations.

With high-resolution, mixed-gain pixel technology, AttackPRO VRS ensures clear visibility of both fire and crew in one detailed image. The kit includes the camera, 2 batteries, and a charging dock.

Designed and Manufactured in the USA with Global Components.  
Thermal sensor designed and manufactured by Seek in Santa Barbara, CA USA



## KEY FEATURES

### Video Recording + 650°C Detection + Survey Mode

Record up to 5 hours of video on AttackPRO's 32GB internal drive

### Mixed Gain with SV1 Image Optimization

See the hottest and coolest regions of the scene simultaneously without freezing or switching gain modes; details enhanced with SV1

### Durable, Waterproof Design

Durable and reliable design built with IP67 rating and 2 meter drop resistance

### Wide, 57-Degree Field of View

Easily scan a large area to identify hazards or victims in seconds

### Long-Lasting Rechargeable Battery

Greater than 6 hours of continuous thermal imaging

## BENEFITS

### Decision Making on Command

Direct Firefighters, water, and resources with expedited tactical precision

### Robust Personal TIC

Equip the entire department with the first affordable decision making TIC

### See Through Smoke. Flashlight Optional.

300 lumen LED flashlight available at the touch of a button

### Search and Rescue

Find victims and self-rescue faster with a reliable personal TIC

### Execute 360 Size-ups & Overhaul Faster

When seconds count, a Seek decision-making TIC saves time and lives

## TECHNICAL SUMMARY

SPECIFICATIONS	DESCRIPTION
Thermal Sensor	320 x 240 (76,800 pixels)
Detection Distance	12 inches to 1,000 feet
Field of View	57° HFOV, 42° VFOV
Temperature Range	-4 to 1,200°F (-20 to 650°C)
Operating Temp	-4 to 131°F (-20 to 55°C) - no time limit up to 302°F (150°C) - max 15 min up to 500°F (260°C) - max 5 min
Frame Rate	> 25 Hz Fast Frame
IP Rating	IP67 Waterproof
Flashlight	300 Lumen LED
Display	3.5" Color with Corning® Gorilla® Glass
Thermal Sensitivity	< 35 mK with SVI
User Interface	On device 2 tactile button operation
Temp. Display Scale	Fahrenheit or Celsius
Image modes	3 Options (TI-BASIC, TI-BASIC+ & Survey Mode)
Video Recording	5 Hours of video recording (32GB Internal drive)
Photo Capture	No
Battery	>6 Hours Thermal Imaging (w/o flashlight); >3hrs (with thermal AND flashlight)

For support and user guides visit [thermal.com](http://thermal.com)

## 300 LUMEN LED LIGHT



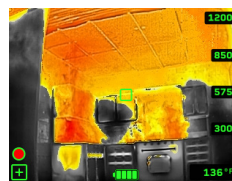
Seek AttackPRO VRS combines powerful thermal insight and a bright LED flashlight in an intuitive, two button interface.

## MODES



### TI BASIC

Maintain your situational awareness with a simple and decluttered display showing greyscale and colorized regions



### TI BASIC+

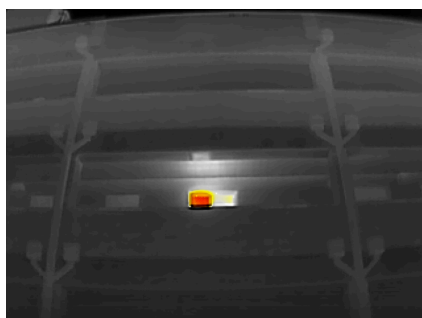
Enhance your tactics with a spot temp readout while still maintaining greyscale and colorized regions



### SURVEY MODE

Investigative mode with early colorization at 65C (150F) ideal for size up, bells & smells, and overhaul

## THERMAL APPLICATIONS



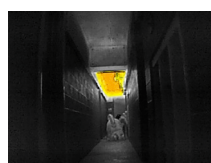
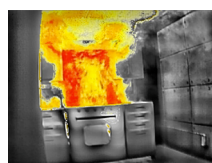
360 SIZE UP



FIRE ATTACK



OVERHAUL



Seek more at [thermal.com](http://thermal.com)

6300 Hollister Ave, Santa Barbara, CA 93117

Seek Thermal engineers, designs and manufacturers high quality thermal imaging products and core platforms for consumer, commercial, and heat sensing IoT data applications. With headquarters in Santa Barbara, California, the global hub of thermal imaging innovation, the company has developed breakthrough thermal imaging camera cores that will enable a range of affordable products for use at home, work and play. For more information visit [thermal.com](http://thermal.com) and follow #seekthermal on Instagram and @seekthermal on Twitter.

SKU: FD-SAA



### TECHNICAL SUMMARY

SPECIFICATIONS	DESCRIPTION
AC INPUT	100-240 VAC 50/60 HZ, 0.5 A
SUPPLY VOLTAGE	5VDC
POWER RATING	10W
ENVIRONMENTAL	INTENDED FOR INDOOR USE
CHARGE TIME	6 HOURS
INCLUDED IN THE BOX	DESKTOP CHARGER CRADLE POWER SUPPLY INCLUDING AC PLUGS FOR US, EU, UK

For support and user guides visit [thermal.com](https://thermal.com)

### Seek more at [thermal.com](https://thermal.com)

6300 Hollister Ave, Santa Barbara, CA 93117

Seek Thermal engineers, designs and manufactures high quality thermal imaging products and core platforms for consumer, commercial, and heat sensing IoT data applications. With headquarters in Santa Barbara, California, the global hub of thermal imaging innovation, the company has developed breakthrough thermal imaging camera cores that will enable a range of affordable products for use at home, work and play. For more information visit [thermal.com](https://thermal.com) and follow #seekthermal on Instagram and @seekthermal on Twitter.

**SKU: FA-BAA**



## TECHNICAL SUMMARY

SPECIFICATIONS	DESCRIPTION
BATTERY MATERIAL	LITHIUM ION
NOMINAL VOLTAGE	3.63 V
NOMINAL CAPACITY	4900 mAh
OPERATING TEMPERATURE RANGE	DURING DISCHARGE: -20°C TO 60°C DURING CHARGING: 0°C TO 45°C
WEIGHT	115g
SIZE	170 X 45 X 43 mm
COMPATIBLE WITH	FQ-PPAX FQ-PPNX FQ-PPVX

For support and user guides visit [thermal.com](https://thermal.com)

**Seek more at [thermal.com](https://thermal.com)**

6300 Hollister Ave, Santa Barbara, CA 93117

Seek Thermal engineers, designs and manufactures high quality thermal imaging products and core platforms for consumer, commercial, and heat sensing IoT data applications. With headquarters in Santa Barbara, California, the global hub of thermal imaging innovation, the company has developed breakthrough thermal imaging camera cores that will enable a range of affordable products for use at home, work and play. For more information visit [thermal.com](https://thermal.com) and follow #seekthermal on Instagram and @seekthermal on Twitter.